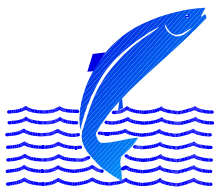


**Icelandic Salmon, Trout and Char
Catch Statistics 2000**

Guðni Guðbergsson

May 2001

VMST-R/0115



VEIÐIMÁLASTOFNUN
Institute of Freshwater Fisheries

Vagnhöfði 7, 110 Reykjavík. phone: 5676400; telefax: 5676420
www.veidimal.is gudni.gudbergsson@veidimal.is

CONTENTS

INTRODUCTION.....	1
METHODS.....	2
RESULTS.....	2
Sport fishery.....	2
Net fishery.....	3
Ocean ranching.....	3
The salmon catch and harvest.....	3
DISCUSSION.....	3
REFERENCES.....	5
FIGURES AND TABLES.....	6-21

INTRODUCTION

There are five fish species in freshwater in Iceland. These are the salmonid species, Atlantic salmon (*Salmo salar*), brown trout (*Salmo trutta*) and Arctic charr (*Salvelinus alpinus*). The other two are, European eel (*Anquilla anquilla*) and three-spined sticklebacks (*Gasterosteus aculeatus*). Of these species salmon is of the highest economic value.

The fishing season in Icelandic rivers is 3 1/2 months during the period from 20th of May to 30th of September. The daily fishing period is 12 hours, between sunset to dawn, and fishing is always closed between 3 am to 7 am. In most Icelandic rivers rod and line is the only allowed fishing gear. There is a fixed number of rods used in each river as decided by the Directorate of Freshwater Fisheries. As a rule of thumb 1 fish/day/rod, on the average, is used for deciding the number of rods allowed.

Net fishery only takes place in the largest glacial rivers. There has been a general ban on ocean salmon fishing in Icelandic waters since 1932. An exception were 5 localities in the western part of Iceland (Vesturland) (Figure 1). At these localities gillnets, set out from land, have been used. In 1998 these fishing rights were permanently bought out by fishery associations in nearby rivers with the governmental support. This is possible since salmon caught by anglers are more valuable than salmon in net fishery. All salmon harvested in Iceland is in fresh water and mostly based on single stock fishery.

The fishing rights go with the ownership of the land adjacent to the rivers. The landowners are usually farmers. All the owners of the fishing rights in a river system form a fishery association, which manages the exploitation of the fish stocks, within the frame set by the law. Usually the association rents or leases the fishing rights to angling clubs or directly to anglers.

The catch is recorded in special logbooks in the fishing lodges. At the end of each fishing season the logbooks are gathered by the Institute of Freshwater Fisheries. Statistical information is then processed. The information is sent back to the fisheries associations with new logbooks before the next fishing season.

Statistics from Icelandic rivers for the 2000 fishing season have now been processed and the main results are in this report. This work is based on Gudbergsson (2001), Lax- og silungsveiðin 2000, Report from the Institute of Freshwater Fisheries (in Icelandic). Statistics have been compiled this way since 1974.

METHODS

Iceland is divided into statistical regions regarding salmon catches (Figure 1.) Information on the catch in each region is summarized. The results from all regions are then combined for the whole country. The catch statistic for each river is summarized by method. The harvesting methods used are rod and line and gillnets. Ocean ranching harvest is also summarised. By tradition the weight of freshwater fish in Iceland was usually measured in pounds where 1 pound = 500 g. Before the 1999 fishing season this was changed to kg with accuracy of 0,1 kg. Length is measured in cm. For each fish, date of catch, locality in the river and name of the fisherman is recorded. Fishing localities are often numbered for ease of processing.

The salmon catch is divided by weight into grilse (1SW, one winter at sea) and salmon (2SW, two winter at sea). Males up to 4 kg and females up to 3,5 kg are grilse and larger individuals are salmon. This deviation usually shows the same results as aging by scales. Salmon older than 2 winters at sea are rare.

Brown trout and arctic char are caught in many rivers as by-catch with the salmon. In other rivers these two species are the most dominant species. In this report there is no difference made between stationary trout and sea-trout, and sea-run arctic char and stationary arctic char.

Catch-and-release has been increasing in popularity and is on voluntarily basis by the anglers. The catch is processed separately for the total catch and the catch landed.

RESULTS

Sport fishery

A total of 27.257 salmon were caught in rod fisheries in Icelandic rivers in 2000 (Table 1). This is a 13,2 % decrease, by number, from the 1999 season (Table 2., Figure 3), and 22,6 % lower than the 1974-1999 average. The highest number of salmon was caught in River Rangá 3.744. List of the top 10 salmon rivers is shown in Table 3.

Of the 27.257 salmon in the rod catch, 2.918 were caught and released (Table 2), this is 10,7 % of the catch. The number of salmon landed was 24.432 and 70,2 tonnes

A total of 39.822 brown trout and 41,8 tonnes were recorded. The highest catch was in Lake Veidivötn 12.205 fish and 6.522 fish in River Laxá í Þingeyjarsýslu (Table 4). The total catch of arctic charr was 34.833 fish and 28,5 tonnes with the highest catch in River Viðidalsá og Fitjá, 3.138 fish (Table 5).

Of the statistical regions in Iceland the highest number of salmon was caught in the rod fishery in Vesturland 10.255 salmon and lowest in Vestfirðir 517 salmon (Tables 6-12).

Net fishery

In the net fishery 4.170 salmon and 12,6 tonnes were caught in rivers. The salmon catch, in numbers, in gillnets was 37% lower than the 1999 fishing season but 71% lower than the 1974 - 1999 average. (Table 2; Figure 3).

Ocean ranching

A total of 375 salmon, 2 tonnes, returned to ocean ranching facilities in 2000. The total number of salmon returning from ocean ranching has been declining for the last few years (Figure 4).

The salmon catch and harvest

The total number of salmon caught in the sports fishery and gillnets as well as returning to ocean ranching sites was 28.977 salmon with a total weight of 84,8 tonnes. In the rod fishery 22.920 fish (84%) were grilse (1SW) and 4.337 (16 %) were salmon (MSW) (Table 13). In the rod fishery the grilse/salmon ratio was 5,5, in gillnets 3,8 and all returning salmon in ocean ranching were 2SW fish (Table 14).

For long-term comparison, the salmon catch rivers in Iceland are given for the period 1974-2000 with a calculation of the average, maximum and minimum catch (Table 15). In similar way the catch of brown trout is given in Table 16 and arctic char in Table 17 for the period from 1987-2000.

Gillnet catch of salmon, brown trout and arctic char is shown in table 18.

Salmon fishery based on put and take fishery with salmon transported from ocean ranching stations was operated in one river (Table 19).

Catch of non-native fish species

Two Rainbow trout (*Onchorynchus mykiss*) and 5 Pink salmon (*Onchorynchus gorbuscha*) were caught in Icelandic rivers in 2000 (Table 20).

DISCUSSION

Since 1932 there has been a general ban on ocean fishery in Icelandic waters with the exception of few locations with coastal fishery. The number of nets has been lowering due to

lease of nets and buy-out of fishing rights, by anglers and river owners. Now the fishing rights in coastal areas have been bought-out permanently with the support from the government. Since the 1998 fishing season all salmon were harvested in freshwater. Since the number of rods used has been almost the same for the past 26 years the catch can be used as an indicator of the size of the salmon run. As seen from the catch statistics the salmon catch in rivers in the same area show similar fluctuations.

The proportion of MSW fish is usually higher in rivers in the north and northeast Iceland. Since 1983-1984 the number of 2SW salmon has been declining. This happens although the sex ratio of the run is stable with close to 65% females for MSW and 20% for 1SW for the period from 1973. That could be due to higher mortality at the second year at sea in the later years (Gudni Gudbergsson unpublished data). Reasons for this are not clear but this seems to be connected to environmental factors (Gudjonsson et.al. 1995.) These changes affect the catch in rivers with high proportion of MSW.

The number of salmon in ocean ranching has been declining due to lower number of released smolts. In 1999 no smolts were released for ocean ranching and all harvest in 2000 were 2SW fish.

There are considerable fluctuations in the salmon catch in Iceland. Usually salmon catch in rivers in the same region fluctuate together. The size of the salmon run is decided by the number of smolts and survival at sea. There are common factors affecting the production of smolts in the rivers and the return rates from the ocean. Climatic factors are of greatest importance and significant correlation has been found between the catch of grilse and ocean temperature at the time the smolts are migrating (Scarnecchia 1984; Antonsson et. al. 1996).

The exploitation rate in rod fisheries in Icelandic rivers are believed to be between 30-80% (Gudjonsson 1986). Recent information on exploitation in the rod fishery indicates that it can, in some rivers, be high (Gudjonsson et. al. 1996).

Non-native fish are caught in Icelandic rivers almost every year. This is year rainbow trout that are believed to be escapees from aquaculture. On the other hand pink salmon are caught annually. They are of unknown origin but the only location known with populations of pink salmon are in the rivers flowing to the Atlantic from the Great lakes in USA and Canada.

REFERENCES

Antonsson, Th., Gudbergsson, G. and Gudjónsson, S. 1996. Environmental continuity in fluctuation of fish stocks in the North Atlantic Ocean, with particular reference to Atlantic salmon. *North American Journal of Fisheries Management* 16:540-547.

Gudbergsson, G. 2001. Lax- og silungsveiðin 2000. Report from The Institute of Freshwater Fisheries, VMST-R/0105.

Gudjónsson, Th. 1986. Exploitation of Atlantic Salmon in Iceland. In: *Atlantic Salmon: Planning for the future.* (ed.) Derik Mills and David Piggins.

Gudjónsson, S. Einarsson, S.M., Antonsson, Th. and Gudbergsson, G. 1995. Relation of grilse/salmon ratio to environmental changes in several wild stocks of Atlantic salmon (*Salmo salar*) in Iceland. *Can. J. Fish. Aquat. Sci.* 52:1385-1398.

Scarnecchia, D.L. 1984. Climatic and oceanic variations affecting yield of Icelandic stocks of Atlantic salmon. *Can. J. Fish. Aquat. Sci.*, Vol 41, pp 917-935.

Scarnecchia, D.L. 1984. Forecasting yields of two-sea-winter Atlantic salmon (*Salmo salar*) from Icelandic Rivers. *Can. J. Fish. Aquat. Sci.*, 8:1234-1240.

Scarnecchia, D.L., Isaksson, A., White, S.E. 1989. New and revised catch forecasts for two-sea-winter Atlantic salmon (*Salmo salar*) in Icelandic rivers. *J. Appl. Ichthyol.* 5:101-110.

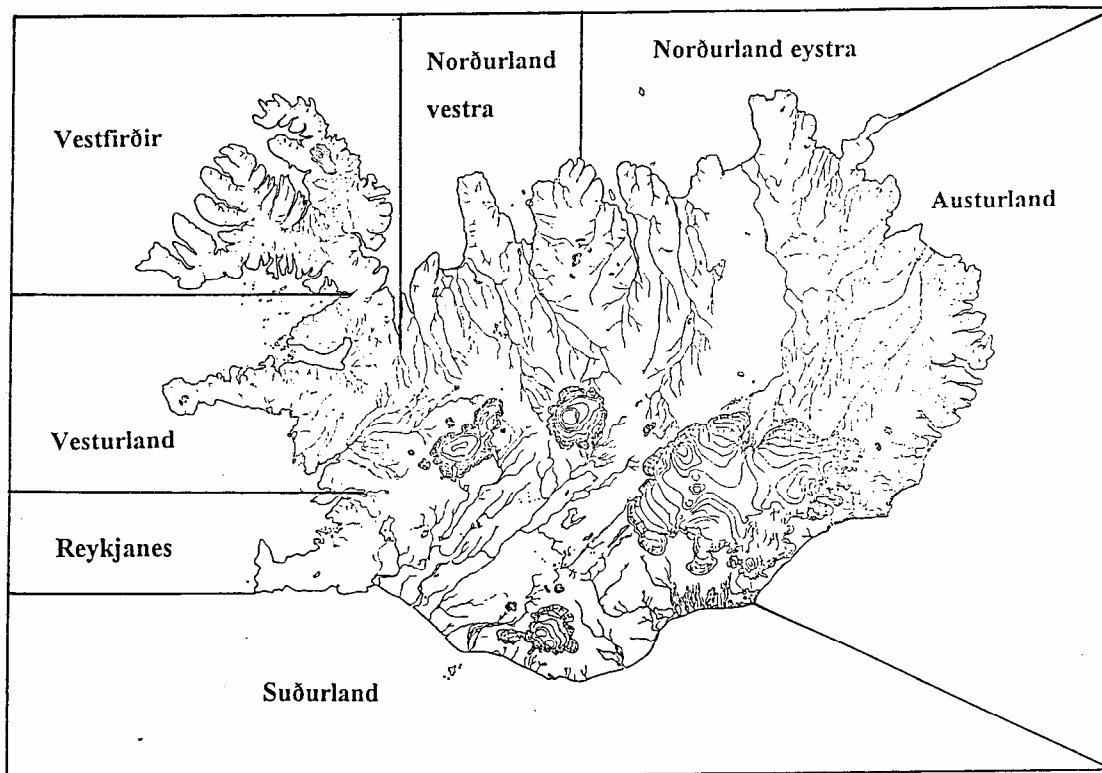


Figure 1. Iceland divided into statistical regions for the salmon catch.

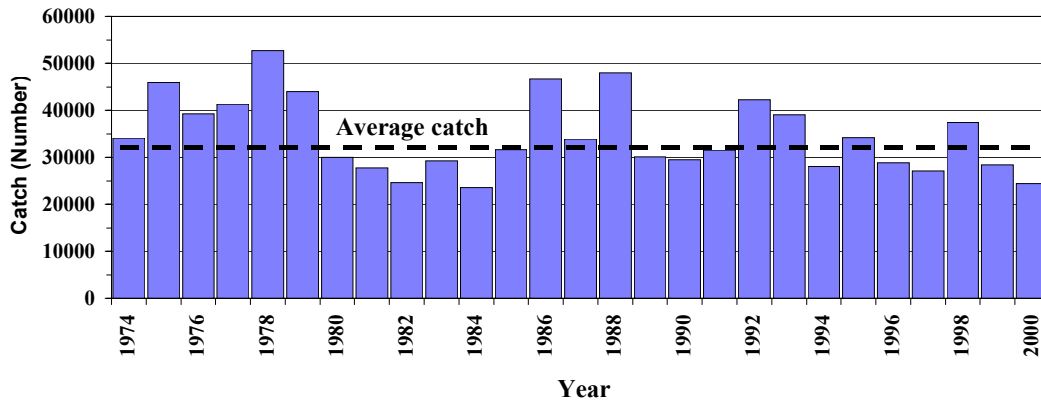


Figure 2. Total number of salmon in the rod fishery in Iceland 1974 - 2000.

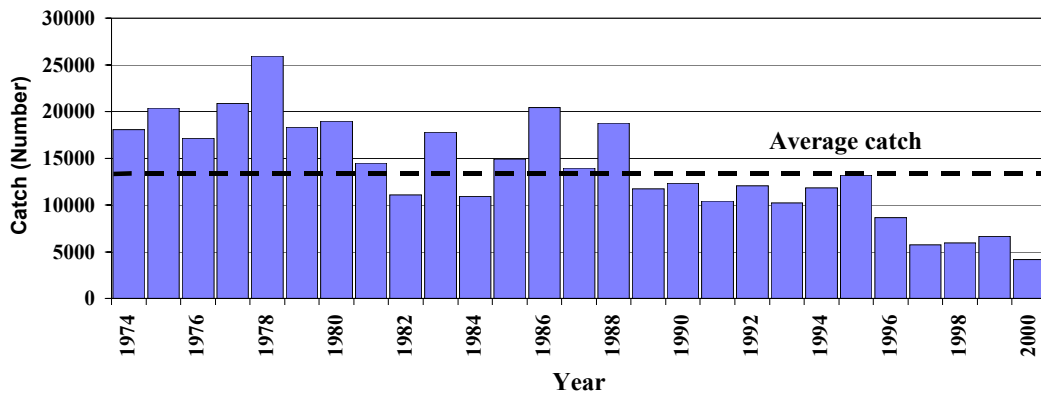


Figure 3. Total number of salmon in the net fishery in Iceland 1974 - 2000.

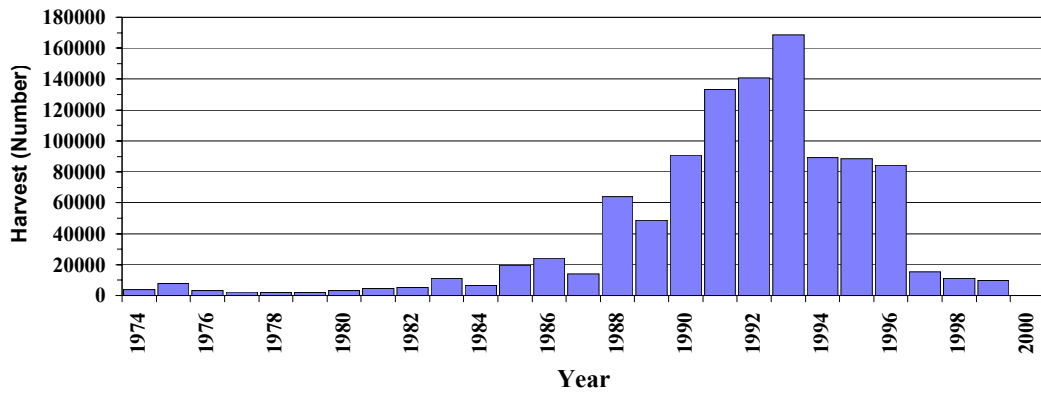


Figure 4. Total number of salmon harvested in ocean ranching in Iceland 1974 - 2000.

Table 1a. The salmon catch in Iceland 2000 by method and by regions (weight is in kg).

Region	Rod fishery				Net fishery		Ocean ranching		Total		Percentage	
	Number	Released	Catch landed	Weight landed	Number	Weight	Number	Weight	Number	Weight	Number	Weight
Reykjanes	2657	200	2457	6056					2657	6056	8,4	7,1
Vesturland	10255	1320	8974	23875	270	782	375	2000	10900	26657	34,3	31,4
Vestfirðir	514	7	507	1508					514	1508	1,6	1,8
Norðurland vestra	3746	309	3437	11656	83	215			3829	11871	12,0	14,0
Norðurland eystra	2598	327	2271	8140	114	392			2712	8532	8,5	10,1
Austurland	2643	693	2004	6242	10	20			2653	6262	8,3	7,4
Suðurland	4844	62	4782	12686	3693	11212			8537	23898	26,8	28,2
Total catch	27257	2918	24432	70163	4170	12621	375	2000	31802	84784	100,0	100,0

Table 1 b. The trout and char catch in rod the fishery in Iceland 2000 by regions (weight is in kg).

Region	Rod fishery Brown trout				Rod fishery Arctic char			
	Catch	Released	Catch landed	Weight landed	Catch	Released	Catch landed	Weight landed
Reykjanes	1896	32	1864	1008	161	0	161	55
Vesturland	2095	76	2019	2226	5723	138	5585	4916
Vestfirðir	27	1	26	21	681	46	635	499
Norðurland vestra	4363	116	4247	3480	12464	179	12285	13954
Norðurland eystra	8534	606	7928	9777	6504	18	6486	6559
Austurland	311	2	309	214	2751	46	2705	2142
Suðurland	16503	219	16284	20837	6595	81	6514	5340
Total catch	33729	1052	32677	37563	34879	508	34371	33465

Table 2. Rod catch, number of released salmon in the rod fisheries, net catch and harvest in ocean ranching of salmon in Iceland 1974 - 2000.

Year	Rod catch	Released	Rod catch landed	Net catch landed	Catch rod and net	Ocean ranching	Total number	Wild salmon (%)
1974	34107		34107	18044	52151	3765	55916	93,3
1975	45882		45882	20402	66284	7720	74004	89,6
1976	39249		39249	17130	56379	3247	59626	94,6
1977	41302		41302	20864	62166	2405	64571	96,3
1978	52679		52679	25946	78625	1953	80578	97,6
1979	43955		43955	18306	62261	1967	64228	96,9
1980	30007		30007	18992	48999	3138	52137	94,0
1981	27777		27777	14478	42255	4626	46881	90,1
1982	24671		24671	11107	35778	5340	41118	87,0
1983	29267		29267	17761	47028	11194	58222	80,8
1984	23582		23582	10912	34494	6595	41089	83,9
1985	31621		31621	14942	46563	19750	66313	70,2
1986	46671		46671	20437	67108	24100	91208	73,6
1987	33907		33907	13960	47867	14140	62007	77,2
1988	47979		47979	18781	66760	64017	130777	51,0
1989	30082		30082	11738	41820	48617	90437	46,2
1990	29443		29443	12339	41782	90726	132508	31,5
1991	31492		31492	10454	41946	133203	175149	23,9
1992	42309		42309	12062	54371	140763	195134	27,9
1993	39025		39025	10197	49222	168427	217649	22,6
1994	28042		28042	11846	39888	89225	129113	30,9
1995	34241		34241	13185	47426	88527	135953	34,9
1996	29436	669	28767	8668	37435	84365	121800	30,7
1997	28640	1558	27082	5735	32817	15248	48065	68,3
1998	40286	2826	37460	5939	43399	11223	54622	79,5
1999	31438	3055	28383	6657	35040	9648	44688	78,4
2000	27257	2918	24432	4170	28602	375	28977	98,7
Average 1974-1999	35273	2027	34961	14265	49226	40536	89761	54,8

Table 3. Top 10 list of salmon rivers in Iceland 2000.

No	River	Salmon catch
1	Rangárarnar	3744
2	Norðurá	1650
3	Selá í Vopnafirði	1360
4	Þverá og Kjarrá	1281
5	Grímsá og Tunguá	1048
6	Langá	1011
7	Laxá í Kjós	940
8	Laxá í Leirársveit	925
9	Laxá í Aðaldal	916
10	Hofsá og Sunnudalsá	804

Table 4. Top 10 list brown trout rivers in Iceland 2000.

No	River	Brown trout catch
1	Veidivötn	12205
2	Laxá í Þingeyjarsýslu ofan Brúa	6522
3	Fremri Laxá á Ásum	2980
4	Laxá í Aðaldal	1647
5	Meðalfellsvatn	1321
6	Grænflakur	1264
7	Þórisvatn	1235
8	Hvítá í Borgarfirði	924

Table 5. Number and weight in the rod catch in the Vesturland in 2000. Catch, landed, mean weight, grilse/salmon ratio of Atlantic salmon, brown trout and arctic charr (MW = mean weight (kg))

River	Salmon			Grilse			Salmon			Brown trout			Arctic charr						
	Catch	Released	Landed	Catch	Released	Landed	Catch	Released	Landed	Catch	Released	Landed	Catch	Released	Landed				
Vötn í Svinadal	4	0	4	8	2,0	16	4	4	2,0	0	0	0	71	1,0	2	2	1,2		
Selós og Þverá	110	0	110	286	2,6	10,0	100	100	2,4	10	10	4,0	81	81	1,1	0	0	0,0	
Laxá í Leirársveit	925	266	659	1644	2,5	14,4	865	616	2,3	60	43	5,2	176	155	1,0	43	37	0,9	
Leirá í Leirársveit	9	0	9	26	2,9	8,3	7	7	2,6	2	2	3,7	15	15	1,3	16	16	1,2	
Hvítá í Borgarfirði	425	6	419	1062	2,9	4,4	346	342	2,4	79	77	4,9	924	917	1,1	2	2	1,0	
Andakilsá	1048	343	705	1939	2,8	7,2	920	629	2,5	128	76	4,8	250	247	1,2	1	1	1,5	
Flokadalsá	380	4	376	897	2,4	24,3	365	361	2,3	15	15	4,6	2	2	1,0	1	1	0,7	
Reykjadalsá	72	0	72	197	2,7	11,0	66	66	2,5	6	6	5,0	2	2	1,0	0,9	2	2	1,3
Þverá og Kjarrá	1281	9	1272	3707	2,9	5,9	1096	1088	2,6	185	184	5,1	463	462	1,3	8	5	0,6	
Norðurá	1250	76	1174	2057	2,5	9,0	1498	1427	2,2	152	147	4,9	151	142	1,0	8	8	1,0	
Norðlingafjötur	1	0	1	3	3,0	3,0	1	1	1,0	0	0	0	0	0	0,0	0	0	0,0	
Gljúfurá	104	0	104	221	2,2	8,7	101	101	2,2	3	3	4,4	290	20	0,8	0	0	0,0	
Langá	1011	275	736	1844	2,0	12,3	935	681	2,3	76	55	4,7	11	6	0,6	2	2	0,8	
Urriðaa	3	2	1	22	2,0	21,0	21	21	2,4	1	1	5,8	29	24	0,9	0,8	0	0,0	
Alftá og Veita	4	1	3	131	4,3	10,7	106	106	2,6	25	25	4,6	260	440	0,9	7	7	1,0	
Hítará	404	44	360	981	2,8	8,0	359	321	2,5	45	39	5,3	28	28	1,1	146	133	1,1	
Hafjarðará	672	278	394	1068	2,8	9,8	596	357	2,5	76	37	5,0	266	311	1,1	127	74	1,2	
Núpa í Eyjahreppi	6	1	5	35	3,5	0,0	0	0	0,0	1	1	3,5	126	15	1,2	87	85	1,1	
Laxá í Miklaholshreppi	38	2	36	88	2,4	11,7	35	34	2,3	3	2	4,7	29	29	1,6	88	88	1,0	
Straumfjarðará	7	3	4	195	2,8	23,8	190	188	2,4	8	7	4,4	113	9	1,0	35	35	0,9	
Vatnasvæði Lýsa	8	88	0	88	11,0	11,0	70	70	2,9	18	18	4,2	104	0	0,0	0	0	0,0	
Staðará	9	0	9	10	1,1	1,1	10	10	1,1	0	0	0	0	0	0,0	0	0	0,0	
Fremri Laxá	1039	0	1039	330	3,2	11,5	331	331	2,5	6	6	4,0	945	1	0,5	5	5	0,5	
Setbergisá	75	0	75	204	2,8	7,3	66	66	2,5	9	9	4,2	5	5	0,8	2	2	1,2	
Laxá í Skógartrönd	27	0	27	92	3,4	1,7	17	17	2,7	10	10	4,6	50	50	0,9	72	72	0,8	
Dunká	45	0	45	145	3,2	4,0	36	36	2,7	9	9	3,2	0	0	0,0	4	4	1,0	
Hörudalsá																			
Skrumfjörðingur																			
Miða og Tunguá																			
Hlíðadalsá neðri	582	10	572	638	2,8	14,0	298	298	2,4	54	48	5,0	0	0	0,0	49	49	0,9	
Hlíðadalsá efri	2	0	2	2	2,0	2,0	1	1	2,0	0	0	0,0	460	460	0,8	1955	1955	0,7	
Laxá í Ölfusá (Kjörpa)	607	0	607	1849	3,0	4,3	509	509	2,3	98	98	5,4	6	6	0,6	59	59	0,9	
Laxá í Ölfusá (Vötn)	487	0	487	112	0,2	0,6	46	46	0,2	0	0	0,0	6	6	0,9	54	54	0,9	
Andakilsá	143	2	141	347	2,5	13,3	133	131	2,3	10	10	4,2	0	0	0,0	1	1	0,7	
Laxá í Kjós	940	134	806	2148	2,6	10,6	859	726	2,4	81	76	4,9	377	353	1,3	4	4	0,6	
Laxá í Hvammsveit	122	38	84	209	2,3	21,2	122	122	2,2	10	10	3,4	0	0	0,0	7	7	0,8	
Meðalfellsvatn	108	11	100	230	2,3	35,0	103	104	2,8	3	3	5,8	130	130	0,8	220	220	0,8	
Reykjadalsá	176	0	176	288	3,5	2,2	310	310	2,3	246	245	5,7	6	2	0,5	0	0	0,0	
Hörudalsá	143	18	125	130	2,3	5,7	188	188	2,3	7	7	5,6	4	4	0,5	11	11	0,8	
Skrumfjörðingur og Hvílsá	26	0	26	68	2,6	4,2	21	21	2,4	5	5	3,7	2	2	1,0	949	926	0,6	
Vesturland total:	10255	1320	8935	23875	2,3	8,0	9112	7943	2,3	1143	992	2965	2880	1,1	3112	3009			
Reykjanes total:	2657	200	2457	6056		15,9	2500	2310		157	147	2243	2218		1243	1243			

* Salmon from ocean ranching in put and take fishery see table 19.

Table 8. Number and weight in the rod catch in Vestfirðir in 2000. Catch, landed, mean weight, grilse/salmon ratio of Atlantic salmon, brown trout and arctic charr (MW = mean weight (kg)).

River	Salmon						Grilse			Salmon			Brown trout			Arctic charr		
	Catch	Released	Catch landed	Weight landed	MW	grilse/salmon	Catch	Landed	Weight Landed	Catch	Landed	MW	Catch	Landed	MW	Catch	Landed	MW
Gufudalsá	1	0	1	3	2,7	1,0	1	1	2,7	0	0	0,0	2	2	2,7	1103	1008	0,6
Þorskafjarðará	0	0	0	0	0,0	0,0	0	0	0,0	0	0	0,0	0	0	0,0	0	0	0,0
Fjarðarhornsa *		0																
Mórudalsá	30	0	30	90	3,0	1,0	30	30	3,0	0	0	0,0	0	0	0,0	70	70	1,0
Suðurfossá *			0															
Botnslón	0	0	0	0	0,0		0	0	0,0	0	0	0,0	0	0	0,0	0	0	0,0
Heydalsá	3	0	3	8	2,6	2,0	2	2	1,8	1	1	4,0	37	37	0,8	0	0	0,0
Langadalsá	76	5	71	240	3,4	2,3	53	50	2,4	23	21	5,7	0	0	0,0	160	160	0,9
Ísafjarðará	4	0	4	10	2,4		4	4	2,4	0	0	0,0	0	0	0,0	3	3	0,9
Laugardalsá	156	2	154	404	2,6	11,0	143	142	2,4	13	12	5,5	44	43	0,8	0	0	0,0
Hvannadalsá *			0															
Selá í Skjaldfannardal	0	0	0	0	0,0	0,0	0	0	0,0	0	0	0,0	0	0	0,0	58	58	1,0
Þjarnarfjarðará	0	0	0	0		0,0	0	0	0,0	0	0	0,0	0	0	0,0	230	230	1,0
Selá í Steingrímsf.	11	0	11	32	2,9	1,0	8	8	2,6	3	3	0,0	0	0	0,0	529	527	0,6
Staðará í Steingr. *			0															
Víðidalsá í Steingr.	20	0	20	68	3,4	1,5	12	12	2,2	8	8	5,4	0	0	0,0	1	1	0,0
Hrófa	25	0	25	75	3,0	3,2	19	19	2,2	6	6	5,5	4	4	1,1	77	68	0,7
Prestbakkaá	17	0	17	45	2,6	3,3	13	13	2,1	4	4	4,3	0	0	0,0	0	0	0,0
Krossá	76	0	76	268	3,5	2,2	52	52	2,5	24	24	5,7	2	2	0,5	0	0	0,0
Víkurá	81	0	81	233	2,9	3,3	62	62	2,1	19	19	5,2	0	0	0,0	28	27	1,0
Laxá í Hrutafirði	14	0	14	33	2,4	6,0	12	12	2,1	2	2	4,2	0	0	0,0	0	0	0,0
Vestfirðir total:	514	7	507	1508	2,9	4,0	411	407	30,5	103	100	45,5	89	88		2259	2152	

* no records

Table 9. Number and weight in the rod catch in Nordurland vestra 2000. Catch, landed, mean weight, grilse/salmon ratio of Atlantic salmon, brown trout and arctic charr (MW = mean weight (kg)).

River	Salmon						Grilse			Salmon			Brown trout			Arctic charr		
	Catch	Released	Catch landed	Weight landed	MW	grilse/salmon	Catch	Landed	Weight Landed	Catch	Landed	MW	Catch	Landed	MW	Catch	Landed	MW
Hrutafjarðará og Siká	141	1	140	458	3,3	3,0	106	106	2,5	35	34	5,8	4	4	1,7	610	609	1,3
Tjarnará	10	1	9	22	2,4	9,0	9	8	2,1	1	1	5,5	0	0	0,0	95	95	0,7
Hamarsá	0	0	0	0	0,0	0,0	0	0	0,0	0	0	0,0	0	0	0,0	0	0	0,0
Miðfjarðará	612	17	595	2029	3,4	2,6	441	432	2,6	171	163	5,6	6	6	1,1	97	95	1,2
Arnarvatn-Stóra	0	0	0	0	0,0	0,0	0	0	0,0	0	0	0,0	127	127	1,0	2616	2599	0,7
Víðidalsá og Fitjá	644	47	597	2335	3,9	1,6	398	370	2,6	246	227	6,1	151	151	1,5	3138	3137	0,9
Vatnsdalsá	323	216	107	366	5,0	1,8	208	74	2,6	114	33	6,2	695	692	1,2	2712	2692	1,0
Giljá	22	11	11	29	2,6		20	11	2,6	2	0	0,0	6	6	0,8	1	1	0,5
Giljufurá	41	0	41	124	3,3	3,6	32	32	2,4	9	9	4,9	4	4	0,8	29	29	0,6
Laxá á Asum	770	6	764	1921	2,5	17,8	729	723	2,4	41	41	5,1	46	44	1,1	1	1	0,8
Fremri Laxá á Asum	72	1	71	183	2,6	11,0	66	65	2,4	6	6	4,4	2980	2927	0,6	153	152	0,4
Blanda	706	1	705	2974	4,2	0,9	335	335	2,6	371	370	5,7	145	142	1,2	167	167	0,9
Svartá	170	2	168	472	2,8	5,1	142	140	2,3	28	28	5,3	51	46	1,1	75	74	0,8
Langavatn á Refas.	0	0	0	0	0,0		0	0	0,0	0	0	0,0	177	177	1,2	0	0	0,0
Seyðisá *			0															
Bländulón			0															
Laxá á Refasveit	69	4	65	197	3,0	4,3	56	54	2,5	13	11	5,4	12	11	0,8	15	15	1,1
Hallá	8	0	8	25	3,1	3,0	6	6	2,3	2	2	5,4	0	0	0,0	0	0	0,0
Laxá í Nesjum	8	0	8	23	2,8	3,0	6	6	2,2	2	2	4,5	0	0	0,0	0	0	0,0
Fossá á Skaga	15	0	15	43	4,3	6,5	13	13	2,7	2	2	3,7	0	0	0,0	2	2	1,0
Laxá á Skaga	0	0	0	0	0,0	0,0	0	0	0,0	0	0	0,0	0	0	0,0	0	0	0,0
Húseyjarkvísl	32	0	32	108	4,0	3,0	24	24	2,6	8	8	5,8	397	397	0,7	8	7	0,6
Sæmundará	25	2	23	91	3,9	1,5	15	14	2,7	10	9	5,7	48	48	1,2	297	297	0,5
Norðurá í Skagafirði	3	0	3	11	3,7	2,0	2	2	3,0	1	1	4,5	0	0	0,0	120	120	0,6
Hjaltadalsá og Kolka	10	0	10	30	2,8	7,0	7	7	2,6	3	3	4,1	1	1	0,7	185	185	0,9
Hrollleifsdalsá	4	0	4	11	2,7		4	4	2,7	0	0	0,0	73	73	0,8	311	310	0,6
Flókadalsá	12	0	12	37	3,1	5,0	10	10	2,9	2	2	4,2	244	243	0,9	775	775	0,5
Fljótaá	49	0	49	167	4,2	2,3	34	34	2,4	15	15	5,8	0	0	0,0	944	944	2,1
Norðurland vestra Total	3746	309	3437	11656	3,1	2,5	2663	2470		1082	967		5167	5099		12351	12306	

* no records

Table 10. Number and weight in the rod catch in Nordurland eystra 2000. Catch, landed, mean weight, grilse/salmon ratio of Atlantic salmon, brown trout and arctic charr (MW = mean weight (kg)).

River	Salmon						Grilse			Salmon			Brown trout			Arctic charr		
	Catch	Released	Catch landed	Weight landed	MW	grilse/salmon	Catch	Landed	Weight Landed	Catch	Landed	MW	Catch	Landed	MW	Catch	Landed	MW
Olafsfjarðará *																		
Svarfáaardalsá	0	0	0	0	0,0		0	0	0,0	0	0	0,0	52	52	0,7	560	560	0,8
Þorvaldsdalsá *																		
Hörgá	0	0	0	0		0,0	0	0	0,0	0	0	0	39	39	1,0	1216	1216	1,0
Eyjaþjóðará	3	0	3	9			3	3	9,0	0	0	0,0	241	241	1,0	2620	2620	1,0
Fnjósá	197	0	197	711	3,6	2,2	135	135	2,6	62	62	5,7	22	22	1,2	612	612	1,0
Djúpa	75	1	74	226	3,0	4,8	62	61	2,5	13	13	5,7	2	2	1,5	0	0	0,0
Skjálflavafjót	379	0	379	1416	3,5	1,9	249	249	2,4	130	130	5,7	17	17	1,3	1034	1034	0,5
Laxá í Aðaldal	916	207	709	2733	3,9	1,6	562	462	2,6	354	247	6,2	1647	1580	1,0	115	115	1,0
Laxá í Laxárdal													2111	1922	1,4	13	13	1,6
Laxá í Mývatnssveit													4055	3752	1,3	10	10	1,4
Laxá í Mýv. Haganes													356	340	1,2	18	18	1,5
Reykjadalsá	39	0	39	117	3,0	2,5	28	28	2,2	11	11	4,9	0	0	0,0	0	0	0,0
Mýrarkvísl	49	3	46	117	2,5	8,8	44	41	2,3	5	5	4,8	0	0	0,0	0	0	0,0
Litluárvötn	4	0	4	11	2,6		4	4	2,6	0	0	0,0	512	415	1,2	117	105	1,1
Skjálflavatn	3	0	3	9	3,0	0,0	2	2	2,5	1	1	4,0	51	51	1,2	96	96	1,0
Brunná	1	0	1	7	7,0	0,0	0	0	0,0	1	1	7,0	91	91	1,3	133	133	1,2
Deildará	144	5	139	409	3,0	8,0	128	127	2,8	16	12	4,9	101	101	1,2	13	13	1,0
Ormarsá	163	14	149	419	2,9	7,2	143	137	2,6	20	12	5,2	35	35	1,3	128	128	1,4
Svalbarðsá	92	8	84	268	3,2	4,1	74	69	2,4	18	15	6,7	19	19	0,9	28	26	1,1
Sandá	143	7	136	610	4,5	0,9	67	65	2,5	76	71	6,3	1	1	1,0	1	1	1,0
Hafralónsá	315	79	236	847	3,5	2,4	222	160	2,5	93	76	5,9	3	1	0,7	25	25	1,4
Kverká	16	0	16	57	3,5	1,7	10	10	2,6	6	6	5,1	2	2	1,0	17	17	1,0
Hölkna	59	3	56	174	3,2	3,5	46	46	2,5	13	10	5,9	4	4	1,0	4	4	1,9
Norðurland eystra																		
Total	2598	327	2271	8140	3,1	2,2	1779	1599		819	672		9361	8687		6760	6746	

* no records

Table 11. Number and weight in the rod catch in Austurland 2000. Catch, landed, mean weight, grilse/salmon ratio of Atlantic salmon, brown trout and arctic charr (MW = mean weight (kg)).

River	Salmon						Grilse			Salmon			Brown trout			Arctic charr		
	Catch	Released	Catch landed	Weight landed	MW	grilse/salmon	Catch	Landed	Weight Landed	Catch	Landed	MW	Catch	Landed	MW	Catch	Landed	MW
Miðfjarðá og Kverká	108	0	108	301	2,7	4,4	88	88	2,2	20	20	5,5	4	4	0,7	3	3	1,0
Selá í Vopnafirði	1360	416	944	2902	3,1	3,6	1066	734	2,3	294	210	5,7	8	4	0,5	72	58	0,9
Vesturdalsá	129	0	129	348	2,7	4,4	105	105	2,2	24	24	5,0	2	2	0,7	864	862	0,5
Hofsá	789	213	576	1962	3,5	1,9	519	380	2,2	270	196	5,8	39	37	0,7	744	735	0,9
Sunnudalsá	15	7	8	17	2,4	14,0	14	8	2,1	1	0	5,5	0	0	0,0	0	0	0,0
Gilsá og Selfjót	22	0	22	45	2,0		22	22	2,0	0	0	0,0	88	88	1,0	375	375	1,0
Kelduá	0	0	0	0	0	0,0	0	0	0,0	0	0	0,0	19	19	0,7	52	50	1,0
Fjarðará, Borgarf.	5	0	5	15	3,0		5	5	3,0	0	0	0,0	9	9	0,6	26	26	0,9
Fjarðará, Seyðisfirði.	2	0	2	6	2,9		1	1	1,8	1	1	4,1	1	1	1,0	224	222	0,7
Fjarðará, Loðmundarf.	1	0	1	2	1,9	0,0	1	1	1,9	0	0	0,0	3	3	1,2	235	134	1,0
Breiðdalsá	171	3	168	536	3,2	2,8	126	124	2,2	45	44	5,9	143	143	0,9	601	599	1,3
Geithellnaá *																		
Laxá í Nesjum	41	0	41	108	2,6	19,5	39	39	2,5	2	2	4,2	21	20	1,1	6	6	0,6
Austurland																		
Total	2643	639	2004	6242	2,4	3,0	1986	1507		657	497		337	330		3202	3070	

* no record

Table 12. Number and weight in the rod catch in Sudurland 2000. Catch, landed, mean weight, grilse/salmon ratio of Atlantic salmon, brown trout and arctic charr (MW = mean weight (kg)).

River	Salmon						Grilse			Salmon			Brown trout			Arctic charr		
	Catch	Released	Catch landed	Weight landed	MW	grilse/salmon	Catch	Landed	Weight Landed	Catch	Landed	MW	Catch	Landed	MW	Catch	Landed	MW
Núpsvötn *																		
Laxá, Brúará, Djúpa	4	1	3	10	2,7	3,0	3	2	2,0	1	1	5,0	114	114	2,1	31	31	0,7
Eldvatn á Brunas. *																		
Fossálar	1	0	1	2	1,6		1	1	1,6	0	0	0,0	60	59	1,6	65	65	0,8
Geirlandsá	14	0	14	37	2,6	6,0	12	12	2,3	2	2	2,8	237	233	2,6	54	54	0,7
Skaftá	4	0	4	12	2,9		4	4	2,9	0	0	0,0	552	535	1,9	42	40	0,8
Hörgsá á Síðu	5	0	5	16	3,1	4,0	4	4	2,4	1	1	5,8	129	115	2,6	11	11	0,8
Hæðargarðsvatn	0	0	0	0	0,0		0	0	0,0	0	0	0,0	25	25	1,5	0	0	0,0
Holtsá *																		
Grenlækur	3	0	3	8	2,7		3	3	2,7	0	0	0,0	1246	1222	1,6	128	128	1,4
Eldvatn í Meðallandi	2	0	2	8	3,7	1,0	1	1	3,5	1	1	4,0	53	51	2,2	16	16	1,1
Tungufljót	7	1	6	20	3,2	2,5	5	4	2,3	2	2	4,4	286	205	2,3	40	39	0,9
Vatnsá	41	0	41	108	2,6	12,7	38	38	2,5	3	3	4,3	162	162	1,3	74	74	0,5
Heiðarvatn	5	0	5	19	3,9	1,5	3	3	1,8	2	2	7,0	326	322	0,8	331	320	0,4
Skógaá	2	0	2	9	4,6	1,0	1	1	3,1	1	1	6,1	23	23	1,1	25	25	0,9
Affall, A-Landeyjum	0	0	0	0	0,0		0	0	0,0	0	0	0,0	55	54	1,2	1	1	0,8
Rangár og Hólsá	3741	24	3717	9303	2,5	26,3	3604	3580	2,4	137	137	5,4	493	485	1,6	94	93	1,4
Hróarslækur	4	0	4	11	2,7	3,0	3	3	2,4	1	1	3,7	1	1	2,5	21	21	1,3
Minnivallarlækur	0	0	0	0	0,0		0	0	0,0	0	0	0,0	200	168	1,9	4	3	1,2
Galtalækur			0			0,0												
Kálfá	56	5	51	189	3,7	1,4	33	31	2,7	23	20	5,1	30	29	1,1	3	3	0,9
Fossá, Rauðá *																		
Kaldakvisl													1	1	2,5	2	2	2,0
Kvislaveita													216	216	1,0	0	0	0,0
Botnsvatn													459	459	1,0	0	0	0,0
Fellsendavatn													42	42	1,0	0	0	0,0
Þórisvatn													1235	1235	1,1	0	0	0,0
Veivötn													12205	12205	1,0	583	583	0,5
Ólfusá	258	0	258	763	3,0	5,6	219	219	2,6	39	39	5,0	485	483	1,1	35	35	0,6
Hvítá	204	17	187	647	3,5	2,7	149	134	2,7	55	53	5,5	156	155	1,1	43	43	0,9
Brúará	20	0	20	72	3,7	1,9	13	13	2,8	7	7	4,0	24	22	1,0	856	201	0,9
Litla-Laxá	20	0	20	58	2,9	3,0	15	15	2,3	5	5	4,6	9	9	1,2	0	0	0,0
Stóra-Laxá	183	7	176	596	3,4	3,7	144	139	2,7	39	37	6,2	43	43	1,3	35	34	1,1
Sog	249	7	242	752	3,1	3,7	196	190	2,6	53	52	5,1	28	25	1,4	451	442	1,4
Asgarðslækur	7	0	7	12	1,6		7	7	1,6	0	0	0,0	0	0	0,0	6	6	0,9
Baugstaða	4	0	4	12	2,9		4	4	2,9	0	0	0,0	247	230	1,1	8	5	0,5
Volalækur	6	0	6	15	2,4	2,0	4	4	1,8	2	2	3,7	329	309	0,8	47	47	0,7
Hróarsholtslækur	4	0	4	9	2,2	3,0	3	3	2,2	1	1	4,0	189	189	1,2	0	0	0,0
Hlíðarvatn	0	0	0	0	0,0		0	0	0,0	0	0	0,0	0	0	0,0	2900	2893	0,6
Suðurland																		
Total	4844	62	4782	12686	2,6	11,9	4469	4415		375	367		19660	19426		5906	5215	

* no record

Table 13. Number and grilse/salmon ratio in the rod catch of salmon by regions in Iceland 2000

Region	Grilse			Salmon			grilse/salmon
	Catch	Catch landed	Weight landed	Catch	Catch landed	Weight landed	ratio
Reykjanes	2500	2310	5342	157	147	714	15,9
Vesturland	9112	7943	18989	1144	992	4886	8,0
Vestfirðir	411	407	981	103	100	527	4,0
Norðurland vestra	2663	2470	6118	1082	967	5538	2,5
Norðurland eystra	1779	1599	4111	819	672	4030	2,2
Austurland	1986	1507	3402	657	497	2840	3,0
Suðurland	4469	4415	10660	375	367	2025	11,9
Total	22920	20651	49603	4337	3742	20560	5,3

Table 14. Number of grilse, salmon and grilse/salmon ratio in the catch by different methods 2000.

Catch method	Grilse		Salmon		Grilse/salmon ratio
	Number	Weight	Number	Weight	
Rod catch	20651	49603	3742	20560	5,5
Net catch	3291	8630	867	3981	3,8
Ocean ranching	0	0	275	2000	0,0
Total	23942	58233	4884	26541	4,9

Table 16. Catch of brown trout the rod fishery in some Icelandic rivers in 1987 - 2000.

River	Y		Y		E		A		R					Average	Maximum	Minimum	
	1987	1988	1989	1990	1991	1992	1993	1994	1995	1996	1997	1998	1999	2000	veiði	veiði	veiði
Laxá í Leirársveit	157	1448	194	219	221	223	180	183	153	157	116	189	239	176	275	1448	116
Andakilsá	4	6	1	5	0	2	1	0	3	1	7	3	4	5	3	7	0
Hvítá í Borgarfirði	152	190	99	192	0	149	155	364	305	722	264	583	358	924	318	924	0
Grimsó og Tunguá	71	49	49	74	4	216	108	357	188	30	136	213	189	250	138	357	4
Iþverá og Kjarrá	35	80	36	99	0	121	98	109	152	247	101	247	263	463	147	463	0
Álfhá	29	46	57	108	184	191	156	220	251	261	298	332	324	443	207	443	29
Hítará	5	17	14	30	23	23	39	0	34	61	33	25	30	29	26	61	0
Höröudalsá	7	0	5	8	0	0	0	0	0	0	0	0	0	0	2	8	0
Miðá og Tunguá	0	0	0	1	0	4	0	1	0	0	0	0	0	2	1	4	0
Haukadalsá	0	0	78	3	1	2	1	0	14	0	2	0	0	0	8	78	0
Staðarhólsá og Hvolsá	3	2	3	2	6	3	1	2	1	2	4	2	2	2	3	6	1
Fjarðarhornsa	0	2	1	0	0	0	0	0	0	0	0	0	0	0	0	2	0
Selá í Steingrímsfirði	0	0	0	0	0	0	0	0	0	0	0	0	0	0	0	0	0
Staðará í Steingrímsfirði	0	0	0	0	1	0	0	0	0	0	0	0	0	0	0	1	0
Hrútafjarðará og Síká	1	1	0	2	7	1	0	0	2	1	2	0	1	0	1	7	0
Miðfjarðará	20	16	7	58	41	6	10	7	9	3	2	2	15	6	14	58	2
Viðdalsá og Fitjá	0	3	26	13	41	34	23	14	16	42	52	316	80	151	58	316	0
Vatnsdalsá	366	685	245	667	571	506	335	388	450	318	300	617	520	695	476	695	245
Fremri Laxá á Ásum	1069	2352	338	2965	4121	3911	2709	2744	2011	1301	2379	2567	2496	2980	2425	4121	338
Húseyjarkvisl	60	7	12	426	476	483	369	540	373	349	407	373	349	397	330	540	7
Hrollleifsdalsá	0	13	7	34	102	59	53	0	113	32	126	86	73	58	126	0	
Flökadalsá	87	27	93	111	109	54	82	0	81	29	36	169	244	86	244	0	
Fljótaá	0	3	0	10	0	0	0	0	0	1	1	0	0	1	10	0	
Svarfærdalsá				24		44	23	40	18	44	26	39	30	52	34	52	18
Hörgá				23	79	25	24	38	11	46	43	26	36	39	35	79	11
Eyjafjarðará	34	49	26	67	165	86	100	153	130	146	138	142	169	241	118	241	26
Fnjóská	20	8	14	14	31	25	12	45	27	31	53	25	44	22	27	53	8
Skjálíffandaflljót	591	99	150	119	79	88	44	53	6	18	25	89	69	17	103	591	6
Laxá í Aðaldal	835	894	1079	1275	1465	1286	1307	705	900	594	929	1068	1232	1647	1087	1647	594
Laxá í Laxárdal		807	1075	1012	606	708	508	679	723	713	1020	1981	2099	2111	1080	2111	508
Laxá í Mývatnssveit		2351	3786	3235	2186	1905	1808	1263	1558	1765	2680	5966	4214	4411	2856	5966	1263
Litluarvötn		710	610	422	784	684	730	583	464	416	269	427	466	512	544	784	269
Ormarsá	35	50	21	20	31	28	15	42	9	33	17	11	18	35	26	50	9
Selá í Vopnaf.	3	8	10	14	9	2	4	2	8	9	6	5	14	8	7	14	2
Vesturdalsá	3	1	9	5	4	4	0	6	1	1	0	0	19	2	4	19	0
Hofsá og Sunnudalsá	11	8	53	31	50	43	54	22	24	30	49	32	29	39	34	54	8
Gilsá og Selíljót	33	12	15	72	70	53	39	20	27	45	77	67	34	88	47	88	12
Breiðdalsá	197	31	15	148	169	245	117	307	242	306	375	214	146	143	190	375	15
Geirlandsá	362	303	356	193	88	109	108	118	251	235	389	274	151	237	227	389	88
Skaftá	442	1286	483	192	424	354	464	405	388	813	969	458	456	610	553	1286	192
Eldvatn í Meðallandi	84	170	92	35	27	38	112	129	171	192	161	215	57	53	110	215	27
Grenlækur		700	894	1425	1648	2640	2338	3311	3638	2730	2493	1679	1293	1264	2004	3638	700
Tungulljót	62	67	148	84	134	134	249	156	174	239	384	224	273	286	187	384	62
Heiðarvatn			215	399	301	373	284	255	116	102	212	269	277	326	261	399	102
Rangár og Fiská				179	163	527	359	337	230	393	635	468	487	494	388	635	163
Ólfusá		60	29	44	70	52	58	366	53	103	161	513	399	301	170	513	29
Sogjök	2	6	8	6	10	7	6	11	15	29	23	37	40	28	16	40	2
Hróarholtslækur	403	550	465	322	391	449	301	580	374	326	492	1011	680	765	508	1011	301

Table 17. Catches of arctic charr in the rod fishery in some Icelandic rivers in 1987 - 2000.

Ríver	Y		E		A		R						Average catch	Maximum catch	Minimum catch		
	1987	1988	1989	1990	1991	1992	1993	1994	1995	1996	1997	1998				1999	2000
Laxá í Leirársveit	0	7	7	1	4	6	18	14	21	4	35	62	42	43	19	62	0
Andakilsá	10	231	284	479	3	341	0	3	218	189	238	116	84	0	157	479	0
Hvítá í Borgarfirðri	27	9	15	19	613	88	106	14	12	4	4	78	11	2	72	613	2
Grímsá og Tunguá	1	2	2	24	250	12	3	6	1	1	0	4	4	1	22	250	0
Þverá og Kjarrá	3	9	111	76	113	14	35	25	9	7	63	2	5	8	34	113	2
Álfhá	0	1	2	1	4	6	10	9	2	3	6	6	0	7	4	10	0
Hitará	193	134	132	234	518	396	184	0	259	131	426	7	344	146	222	518	0
Hörðudalsá	18	291	231	614	451	340		271	423	361	1021	1003	453		456	1021	18
Miðá og Tunguá		73	70	470	478	650	530	411	674	350	396	825	925	591	496	925	70
Haukadalsá	679	22	11	237	919	149	267		661	747	629	904	1011	775	539	1011	11
Staðarhólsá og Hvolsá	401	224	338	941	882	397	616	733	934	1490	1316	1469	1016	949	836	1490	224
Fjarðarhornsa	20	107	306	562	536	233	73	80	135	165			47		206	562	20
Selá í Steingrímsfirði	261	12	229	334	259	77	404	145	356			171	246	529	252	529	12
Staðará í Steingrímsfirði	584	35	13	183	385	265	254	163	201	92					218	584	13
Hrútafjarðará og Siká	269	59	68	221	532	192	135	129	221	499	363	564	346	610	301	610	59
Miðfjarðará	236	167	89	221	273	152	97	123	144	47	267	304	277	97	178	304	47
Viðisdalsá og Fitjá	1325	366	26	377	547	467	676	1214	3485	2782	1551	5568	3824	3138	1810	5568	26
Vatnsdalsá	727	1182	270	1642	1851	1112	1427	1058	812	2498	1861	1438	2755	2712	1525	2755	270
Fremri Laxá á Ásum	137	236	15	34	52	35	6	26	41	61	52	64	27	153	67	236	6
Húseyjarkvísl	7	2	8	64	28	17	32	44	48	45	30	46	17	8	28	64	2
Hrollleifsdalsá		47	45	221	401	410	381	628		218	198	377	325	311	297	628	45
Flökadalsá	110	1028	280	2134	2198	1144	1040	1673	489	265	1135	655	2405	775	1095	2405	110
Fljótá		1	44	627	643	881	1242	7071	6928	6931	1648	893	792	944	2203	7071	1
Svarfaðardalsá				873		1049	668	1691	358	417	475	526	704	560	732	1691	358
Hörgá				1692	1394	1238	1783	1590	1063	1245	1293	1229	856	1216	1327	1783	856
Eyjafljóðará	1557	1467	127	2123	2836	3095	3080	3319	2151	2098	3625	3137	2900	2620	2438	3625	127
Fnjöská	496	217	238	390	469	239	251	550	391	339	409	579	700	612	420	700	217
Skjálfafljóti	275	338	561	391	331	160	173	198	151	214	506	403	658	1034	385	1034	151
Laxá í Aðaldal	35	187	114	137	86	48	114	57	52	29	64	52	48	115	81	187	29
Laxá í Laxárdal		18	0	13	8	1	4	1	2	6	18	83	3	13	13	83	0
Laxá í Mývatnssveit		1	63	3	2	2	1	0	1	1	24	329	142	28	46	329	0
Litluárvotn		297	307	310	368	551	259	220	193	131	104	97	123	117	237	551	97
Ormarsá	245	114	141	181	175	127	131	126	103	101	68	93	129	128	133	245	68
Selá í Vopnaf.	249	56	52	211	105	103	51	106	84	164	115	37	55	72	104	249	37
Vesturdalsá	506	51	78	513	1402	726	321	383	474	872	1080	457	815	864	610	1402	51
Höfsá og Sunnudalsá	357	32	143	67	357	471	268	261	183	344	250	246	557	744	306	744	32
Gilsá og Selfjót	230	61	71	455	382	368	242	381	261	532	421	221	340	375	310	532	61
Breiðdalsá	453	74	70	600	22	23	410	369	977	396	197	235	415	601	346	977	22
Geirlandsá	60	69	48	29	50	43	40	39	48	43	28	26	27	54	43	69	26
Skafhá	14	28	12	23	5	7	19	28	14	21	16	56	27	107	27	107	5
Eldvatn í Meðallandi	21	22	3	21	3	27	19	6	60	114	61	29	27	16	31	114	3
Grenlækur		78	12	151	247	177	288	273	403	290	294	223	114	128	206	403	12
Tunguljót	63	37	28	107	65	46	43	85	67	60	53	52	40	57	107	28	63
Heiðarvatn			106	203	213	319	159	296	131	89	498	616	385	331	279	616	89
Rangár og Fiská				75	65	106	90	83	94	165	150	72	54	95	95	165	54
Ólfusá		8	7	12	17	12	10	72	40	20	30	21	11	16	21	72	7
Sogiö	255	312	227	426	558	173	130	209	316	914	754	860	455	451	431	914	130
Hróarholtslækur	13	134	110	144	84	172	92	136	169	360	80	113	96	55	126	360	13

Table 18. Net catch in Icelandic rivers and lakes 2000 where abalible (weight kg).

Location River/Lake	Salmon		Brown trout		Arctic charr	
	Number	Weight	Number	Weight	Number	Weight
Borgarfjörður ocean fishery						
Gufuá			134	147	114	114
Hvítá í Borgarfirði	118	330	27	30	8	8
Langá #	106	297	452	497	1948	1948
Miðá og Tunguá #	39	132				
Vesturland	7	23				
Selá í Skjaldfannardal	270	782	479	527	1956	1956
Vestfirðir					39	39
Sölvabakki, sjávarveiði					39	39
Héraðsvötn					31	34
Miklavatn í Fljótum	38	115	198	172	1022	454
Miklavatn í Skagafirði	45	100			1011	388
Norðurland vestra						
Djúpá #	83	215	198	172	2064	876
Skjálfandafljót	5	27				
Vestmannsvatn	99	347			839	500
Norðurland eystra	15	45				
Miðfjarðará og Kerká #	114	392	0	0	839	500
Gilsá og Selfjót	9	19				
Austurland	1	1	1	1	83	83
Skaftá	10	20	1	1	83	83
Kúðafljót §	5	14	243	482	20	19
Kvíslaveitur	7	17	162	501	0	0
Veiðivötn			25	25		
Apavatn			2647	3366	622	298
Laugarvatn	10	33	5950	2650	22833	7236
Þjórsá	1	8	2	3	140	96
Hvítá í Árnassýslu	976	3072	258	516	0	0
Ölfusá	1158	3701	144	163	147	152
Suðurland	1536	4367	600	673	15	12
Total catch	3693	11212	10031	8379	23777	7813
	4170	12621	10709	9079	28758	11267

§ Catch partly taken by seine

Broodstock fishery

Table 19. Rod catch of Atlantic salmon in put and take fishery 2000.
The salmon originates in ocean ranching (weight is in kg).

River	Atlantic salmon		
	Number	Weight	Average weight
Norðlingafljót	272	1795	6,6

Table 20. Fish of other than native origin corded in Iceland in the 2000 fishing season.

River	Species	Weight (kg)	Length (cm)	Sex	Date
Svínafossá	Rainbow trout	1,2			
Staðarhólsá og Hvolsá	Rainbow trout	2,0			
Hofsá í Vopanfirði	Pink salmon	1,5			12.09
Selá í Vopanfirði	Pink salmon	2,0	52	male	16.08
Þjórsá	Pink salmon				
Ölfusá	Pink salmon				
Ölfusá	Pink salmon				